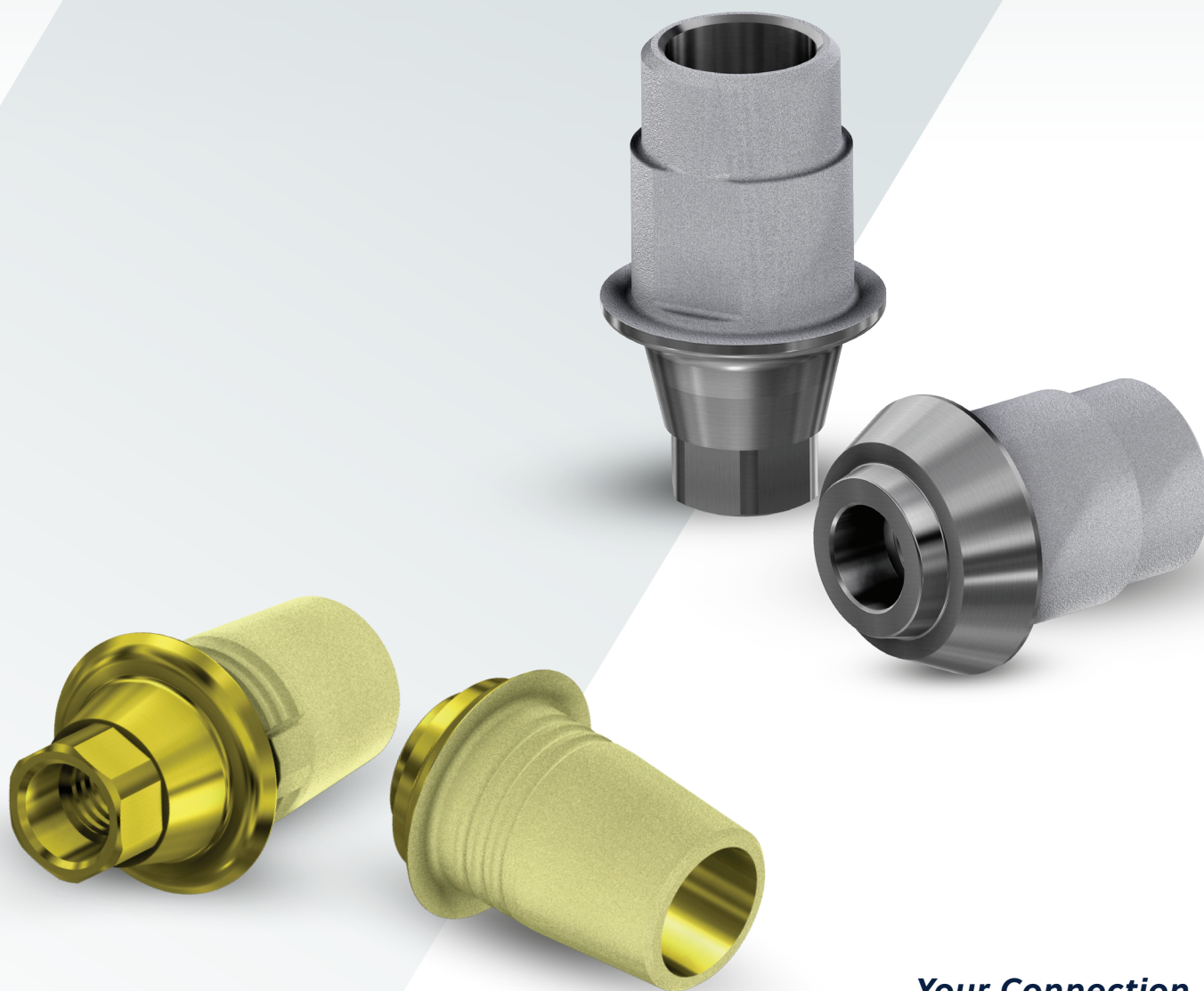


# Azure™ Ti-Base

Multi-Platform Prosthetic Solutions



*Your Connection  
for Every Connection*

**azure™**



## Introducing Azure™ Ti-Base Multi-Platform Prosthetic Solutions

Prosthetically driven, Azure Multi-Platform Ti-Base Solutions provide a variety of options for all your clinical needs.

Designed for total flexibility, Azure Ti-Bases are available with angulated screw channel access and are CEREC® compatible. The roughened surface allows for optimal crown retention and are conveniently offered in multiple gingival heights.

Azure Ti-Bases can be seamlessly integrated into current digital workflows at the Dental laboratory, by simply downloading the libraries for RealGUIDE® CAD, 3Shape, and other leading software at [azuredental.com](http://azuredental.com).

Improve the workflow experience with Azure – your easy 'one-stop-shop' for a comprehensive offering of Ti-Bases and Ti-Base components.

# Azure™ Ti-Base with Angulated Screw Channel Access

## Allows you to access limited spaces

Many clinical situations present where the long-axis of the implant results in an unfavorable location of the prosthetic screw access hole, making accessibility difficult.

The Azure Ti-Base A allows for angular adjustment of up to 25° degrees with a specially designed screw and driver. This design provides clinicians with the ability to use fully recommended torque of the screw, even at maximum angulation.

Ti-Base A has a gold-anodized surface for improved aesthetics as compared to a traditional silver-colored abutment. With patented surface technology for optimal cement retention of the restoration, no additional surface treatment is required at the dental lab, saving you and your technicians time.

- Designed for use in both digital and conventional workflows.
- Azure libraries are available in major CAD software platforms including RealGUIDE CAD, and 3Shape. Simply download the library at [azuredental.com](http://azuredental.com).
- Conventional workflow with castable caps in straight, 10°, and 20° angles.
- Available for 22 implant connections.



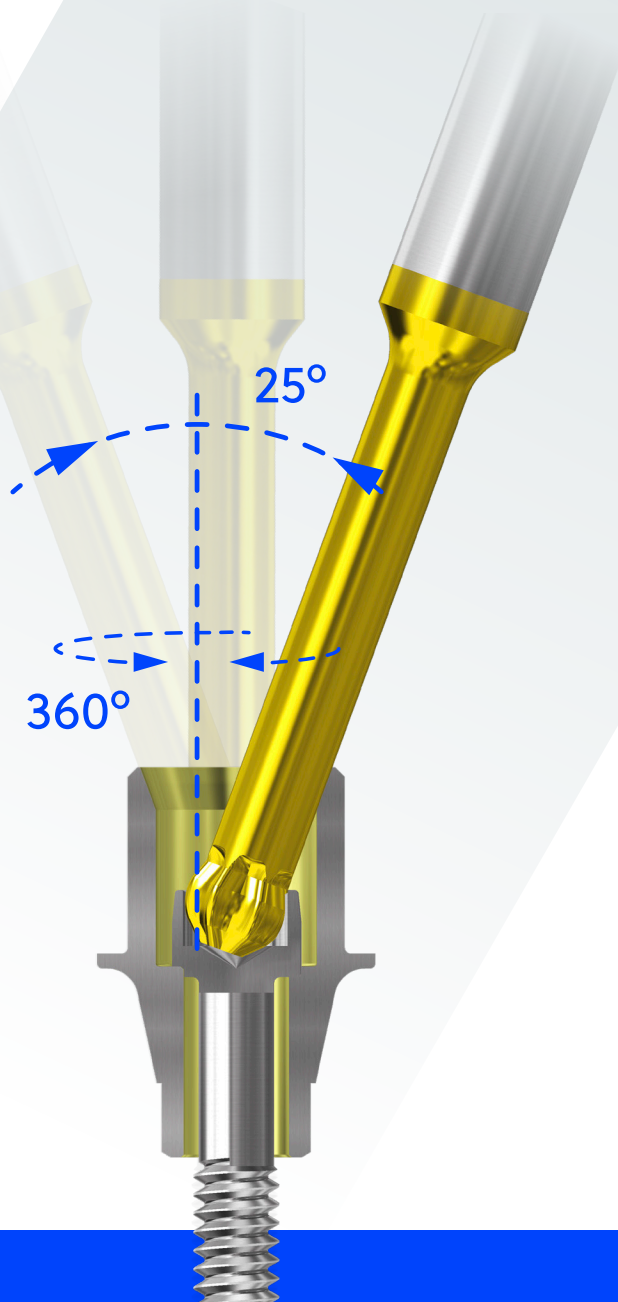
# Ti-Base-A

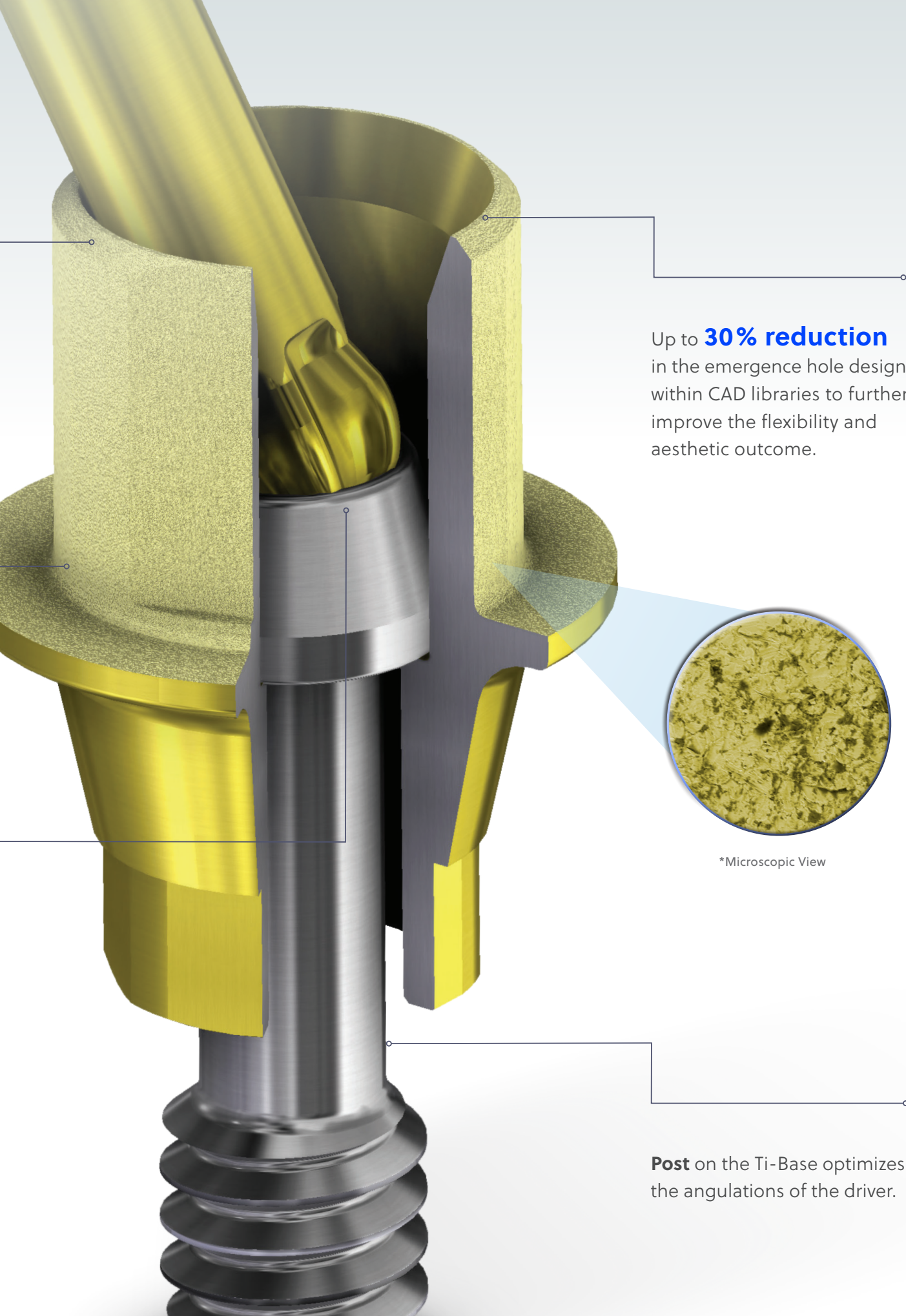
## Features and Benefits

**Bevelled edge** on the Ti-Base optimizes the angulations of the driver.

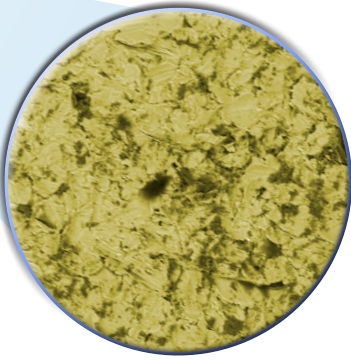
**Gold-anodized surface** for improved aesthetics as compared to a traditional silver colored abutment or Ti-Base.

**Screw and driver tip** are designed to allow up to **25° angulation** at the recommended torque.





Up to **30% reduction** in the emergence hole design within CAD libraries to further improve the flexibility and aesthetic outcome.



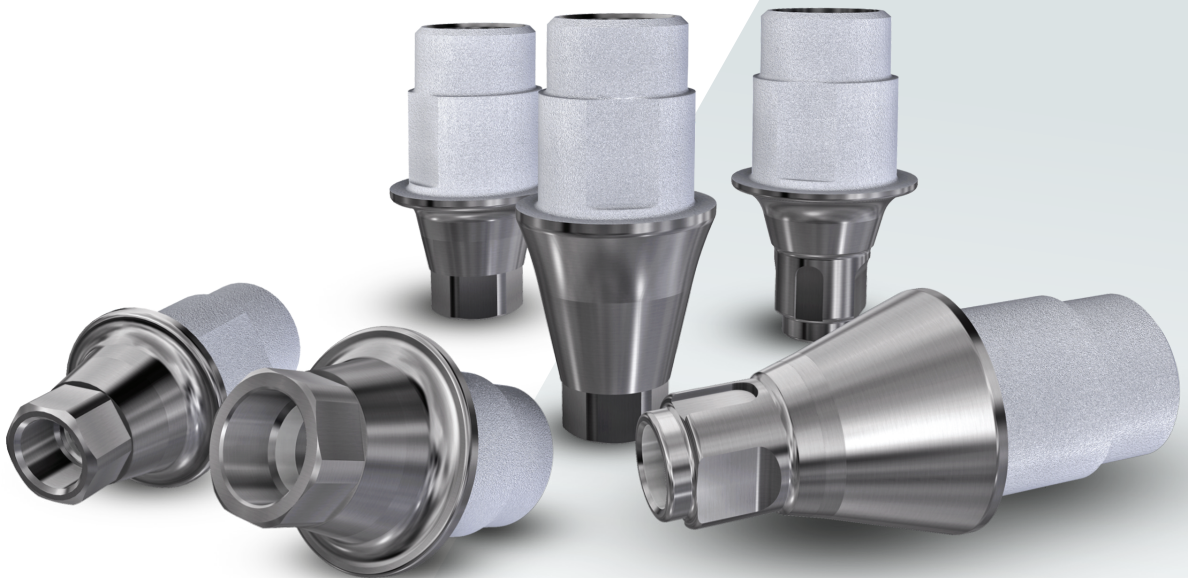
\*Microscopic View

**Post** on the Ti-Base optimizes the angulations of the driver.

# Ti-Base-T

## for Titanium

Cross-platform compatibility with 27 implant systems makes Azure Ti-Base-T a great choice for your restorations.



- The short post height is designed to improve aesthetic results, allowing for translucency of the porcelain and a beautiful aesthetic restoration.
- Includes patented surface technology with up to 500% more bond retention as compared to an un-treated surface provides optimal cement retention, saving you time.
- The Azure Ti-Base-T is available for 27 implant systems for both single-unit and multi-unit restorations.
- Available for multiple collar heights for total flexibility, the Azure Ti-Base-T provides a comprehensive solution for the dental laboratory.



**Single-unit** and **multi-unit** options.

## Patented Surface Technology

The Ti-Base Post features a patented surface technology for optimal retention of the prosthesis.



## Multiple Gingival Heights

Available in various collar heights for restorative flexibility.

# Ti-Base-C

## CEREC Compatible

Compatibility with 15 different implant systems and more than 180 options, the Azure Ti-Base-C is the most comprehensive offer of compatible CEREC compatible Ti-Bases in the market.



### The CEREC workflow offers a complete chairside solution for those clinicians demanding it.

- The Azure Ti-Base-C offers CEREC compatibility whereby clinicians can start with a scan and finish with a definitive restoration in one restorative appointment, saving time and money.
- With added benefits of a gold colored post for improved aesthetics and enhanced retention for the definitive restoration.
- The Azure Ti-Base-C solution offers an improved solution available in Azure libraries for RealGUIDE CAD, 3Shape, and other leading software.





## Digital Workflow

# CEREC / Inlab Systems

### 1 Scan the Azure Ti-Base C intra-orally or on the working model.

Use either the relevant Sirona Scanpost or the S/L Scan Bodies on the Azure Ti-Base-C.

Order from a third party distributor using Sirona Scan Body manufacturer codes:

| Part No: | Description | Part No: | Description             |
|----------|-------------|----------|-------------------------|
| 6431295  | Bluecam S   | 6231802  | InCoris ZI meso, F0.5 S |
| 6431303  | Bluecam L   | 6231810  | InCoris ZI meso, F0.5 S |
| 6431311  | Omnacam S   | 6231828  | InCoris ZI meso, F0.5 S |
| 6431329  | Omnacam L   | 6231836  | InCoris ZI meso, F0.5 S |



### 2 Select the CEREC / Inlab software reference.

Match the implant connection and platform compatibility.

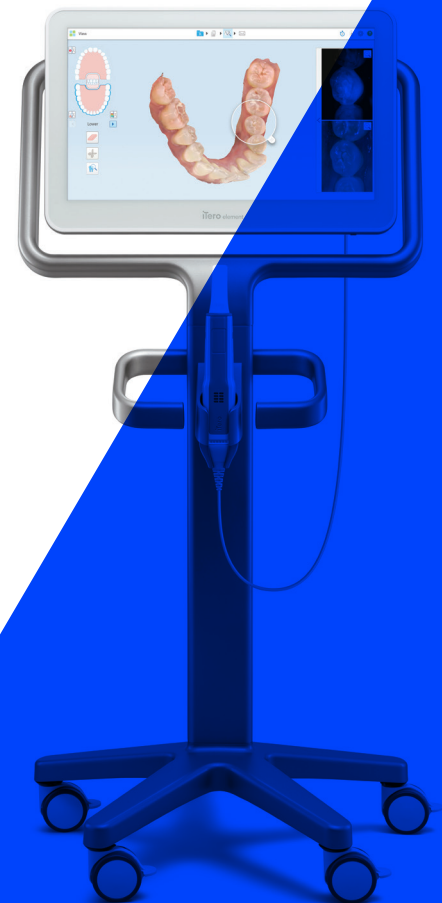
### 3 Follow the Sirona® CAD software instructions.

Design the definitive restoration for your patient.

### 4 Use the milling zirconia blocks to mill your restoration.



### 5 Cement the zirconia restoration to the Ti-Base-C.



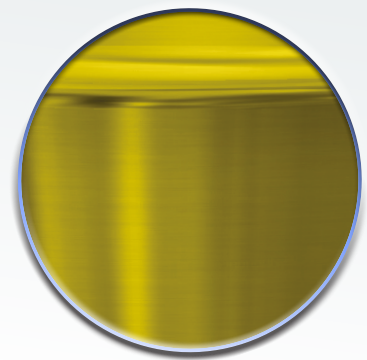
# Ti-Base-C

Re-engineered to Perfection

Enhanced surface properties and features for an improved workflow experience.

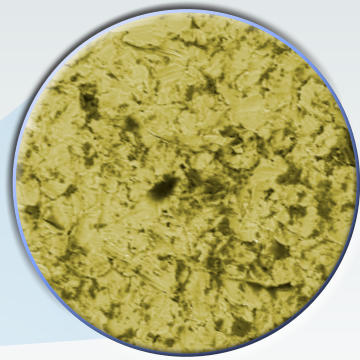


ENGAGING OR  
NON-ENGAGING  
OPTIONS



## Gold-anodized Surface

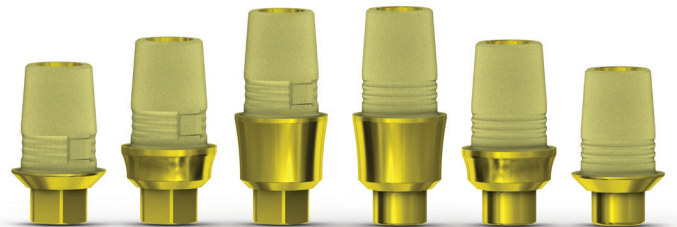
Gold-anodized surface for improved aesthetics as compared to a traditional silver colored abutment or Ti-Base.



\*Microscopic View

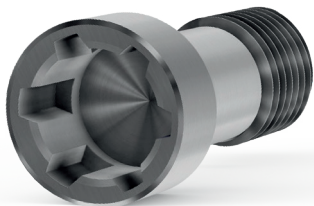
## Patented Surface Technology

The Ti-Base Post features a patented surface technology for optimal retention of the prosthesis.



## Multiple Gingival Heights

Available in various collar heights for restorative flexibility.



## Azure™ Ti-Base-C Includes Final Screw

Identical to the implant brand screw.

## AZURE TI-BASE-C QUICK REFERENCE GUIDE

| Azure System  | Sirona Scan Body Size <sup>1</sup> | Sirona Scanpost Reference | Implant Platform | GH     | Non-Engaging <sup>2</sup> | Engaging        |
|---|------------------------------------|---------------------------|------------------|--------|---------------------------|-----------------|
| <b>DAEV-Conical</b><br>(Astra Tech Implant System™ EV)                  | S                                  | AT EV 3.6 GH1 S           | 3.6 mm (P)       | 1.0 mm | ARDAEV-TBCNH361           | ARDAEV-TBCH361  |
|   | L                                  | AT EV 4.2 GH1 L           | 4.2 mm (P)       | 1.0 mm | ARDAEV-TBCNH421           | ARDAEV-TBCH421  |
|   |                                    | AT EV 4.8 GH1 L           | 4.8 mm (P)       | 1.0 mm | ARDAEV-TBCNH481           | ARDAEV-TBCH481  |
| <b>DATX-Internal</b><br>(Astra Tech Osseospeed™)                        | L                                  | AT OS 3.5/4.0 L           | 3.5/4.0 mm (P)   | 0.8 mm | ARDATX-TBCNH3508          | ARZTSV-TBCH4508 |
|   |                                    | AT OS 4.5/5.0 L           | 4.5/5.0 mm (P)   | 0.9 mm | ARDATX-TBCNH4509          | ARDATX-TBCH4509 |
| <b>BHI-Internal</b><br>(BioHorizons® Internal)                          | L                                  | BH 3.5 L                  | 3.5 mm (P)       | 0.5 mm | ARBHI-TBCNH3505           | ARBHI-TBCH3505  |
|   |                                    | BH 4.5 L                  | 4.5 mm (P)       | 0.5 mm | ARBHI-TBCNH4505           | ARBHI-TBCH4505  |
|   |                                    | BH 5.7 L                  | 5.7 mm (P)       | 0.5 mm | ARBHI-TBCNH5705           | ARBHI-TBCH5705  |
| <b>CCO-Conical</b><br>(Conelog®)  | S                                  | CONOLOG 3.3/x             | 3.3 mm (P)       | 1.0 mm | ARCCO-TBCNH331            | ARCCO-TBCH331   |
|   |                                    | CONOLOG 3.8/x             | 3.8/4.3 mm (P)   | 1.0 mm | ARCCO-TBCNH381            | ARCCO-TBCH381   |
|   | L                                  | CONOLOG 5.0/x             | 5.0 mm (P)       | 1.0 mm | ARCCO-TBCNH51             | ARCCO-TBCH51    |
| <b>DA-Internal</b><br>(Dentsply Ankylos® C/X)                           | S                                  | ANKN C/ GH1 S             | C/X              | 1.4 mm | ARDA-TBCNH3514            | ARDA-TBCH3514   |
|   |                                    | ANKN C/ GH2 S             | C/X              | 2.5 mm | ARDA-TBCNH3525            | ARDA-TBCH3525   |
| <b>DX-Internal</b><br>(Dentsply Friadent Xive®)                         | S                                  | FX 3.4 S                  | 3.4 mm (P)       | 0.3 mm | ARDX-TBCNH3403            | ARDX-TBCH3403   |
|   |                                    | FX 3.8 S                  | 3.8 mm (P)       | 0.3 mm | ARDX-TBCNH3803            | ARDX-TBCH3803   |
|   | L                                  | FX 4.5 L                  | 4.5 mm (P)       | 0.3 mm | ARDX-TBCNH4506            | ARDX-TBCH4506   |
|   |                                    | FX 5.5 L                  | 5.5 mm (P)       | 0.3 mm | ARDX-TBCNH5506            | ARDX-TBCH5506   |
| <b>NAC-Conical</b><br>(NobelActive® and NobelReplace®)                  | L                                  | NB A 4.5 L                | 3.5 mm (P)       | 0.8 mm | ARNAC-TBCNH3508           | ARNAC-TBCH3508  |
|   |                                    | NB A 5.0 L                | 4.3/5.0 mm (P)   | 0.8 mm | ARNAC-TBCNH4308           | ARNAC-TBCH4308  |
| <b>NB-External</b><br>(Nobel Brånemark®)                                | L                                  | NB B 3.4 L                | 3.4 mm (P)       | 0.6 mm | -                         | ARNB-TBCH3506   |
|   |                                    | NB B 4.1 L                | 4.1 mm (P)       | 0.6 mm | -                         | ARNB-TBCH4106   |
| <b>NRT-Trilobe</b><br>(Nobel Replace Select™)                           | L                                  | NB RS 3.5 L               | 3.5 mm (P)       | 0.4 mm | ARNRT-TBCNH3504           | ARNRT-TBCH3504  |
|   |                                    | NB RS 4.3 L               | 4.3 mm (P)       | 0.4 mm | ARNRT-TBCNH4305           | ARNRT-TBCH4305  |
|   |                                    | NB RS 5.0 L               | 5.0 mm (P)       | 0.4 mm | ARNRT-TBCNH504            | ARNRT-TBCH504   |
|   |                                    | NB RS 6.0 L               | 6.0 mm (P)       | 0.4 mm | ARNRT-TBCNH604            | ARNRT-TBCH604   |
| <b>OH-Conical</b><br>(Osstem® TS / Hoissen ET)                          | L                                  | O TS 3.5 L                | Mini             | 1.0 mm | AROH-TBCNH31              | AROH-TBCH31     |
|   |                                    | O TS 4.0 L                | Regular          | 1.0 mm | AROH-TBCNH41              | AROH-TBCH41     |
| <b>SBL-Conical</b> (Straumann® Bone Level and Azure Tapered Bone Level) | L                                  | S BL 3.3 L                | 3.3 mm (P)       | 0.7 mm | ARSBL-TBCNH3307           | ARSBL-TBCH3307  |
|   |                                    | S BL 4.1 L                | 4.1/4.8 mm (P)   | 0.7 mm | ARSBL-TBCNH4107           | ARSBL-TBCH4107  |
| <b>STL-Tissue</b><br>(Straumann® Soft Tissue Level)                     | L                                  | S SO 4.8 L                | 4.1/4.8 mm (P)   | 1.0 mm | ARSTL-TBCNH411            | ARSTL-TBCH411   |
|   |                                    | S SO 6.5 L                | 4.8/6.5 mm (P)   | 1.2 mm | ARSTL-TBCNH4812           | ARSTL-TBCH4812  |
| <b>ZC-Certain</b><br>(ZimVie Certain™) <sup>3</sup>                     | S                                  | B C 3.4 S                 | 3.4 mm (P)       | 0.4 mm | ARZC-TBCNH3404            | ARZC-TBCH3404   |
|   | L                                  | B C 4.1 L                 | 4.1 mm (P)       | 0.4 mm | ARZC-TBCNH4104            | ARZC-TBCH4104   |
|   |                                    | B C 5.0 L                 | 5.0 mm (P)       | 0.4 mm | ARZC-TBCNH505             | ARZC-TBCH505    |
| <b>ZEX-External</b><br>(ZimVie External Hex) <sup>3</sup>               | L                                  | B 0 3.4 L                 | 3.4 mm (P)       | -      | -                         | Coming soon     |
|   |                                    | B 0 4.1 L                 | 4.1 mm (P)       | 0.6 mm | -                         | ARZEX-TBCH4106  |
|   |                                    | B 0 5.0 L                 | 5.0 mm (P)       | 0.6 mm | -                         | ARZEX-TBCH506   |
| <b>ZTSV-Internal</b><br>(ZimVie TSV™) <sup>3</sup>                      | L                                  | Z TSV 3.5 L               | 3.5 mm (P)       | 0.5 mm | ARZTSV-TBCNH3505          | ARZTSV-TBCH3505 |
|   |                                    | Z TSV 4.5 L               | 4.5 mm (P)       | 0.5 mm | ARZTSV-TBCNH4505          | ARZTSV-TBCH4505 |
|   |                                    | Z TSV 5.7 L               | 5.7 mm (P)       | 0.5 mm | ARZTSV-TBCNH5705          | ARZTSV-TBCH5705 |

<sup>1</sup>To scan, use Dentsply Sirona® Scan Bodies: Bluecam S (6431295); Bluecam L (6431303); Omnicam S (6431311); Omnicam L (6431329); InCoris ZI meso F0.5 S (6231802); InCoris ZI meso F0.5 L (6231810); InCoris ZI meso F2 S (6231828); InCoris ZI meso F2 L (6231836)

<sup>2</sup>References can only be used with CEREC InLab software. <sup>3</sup>Not available in all markets, please check with your local ZimVie representative.

|  | <b>GH</b> | <b>Non-Engaging<sup>2</sup></b> | <b>Engaging</b> | <b>GH</b> | <b>Non-Engaging<sup>2</sup></b> | <b>Engaging</b> | <b>Azure Replacement Screw</b> | <b>Torque</b> |
|--|-----------|---------------------------------|-----------------|-----------|---------------------------------|-----------------|--------------------------------|---------------|
|  | 3.0 mm    | ARDAEV-TBCNH363                 | ARDAEV-TBCH363  | -         | -                               | -               | ARDAEV-SHTI12736               | 25 Ncm        |
|  | 3.0 mm    | ARDAEV-TBCNH423                 | ARDAEV-TBCH423  | -         | -                               | -               | ARDAEV-SHXTI2742               |               |
|  | 3.0 mm    | ARDAEV-TBCNH483                 | ARDAEV-TBCH483  | -         | -                               | -               | ARDAEV-SHTI12748               |               |
|  | 3.0 mm    | ARDATX-TBCNH353                 | ARDATX-TBCH353  | -         | -                               | -               | ARDATX-SHTI1274                | 20 Ncm        |
|  | 3.0 mm    | ARDATX-TBCNH453                 | ARDATX-TBCH453  | -         | -                               | -               | ARDATX-SHTI12745               | 25 Ncm        |
|  | 3.0 mm    | ARBHI-TBCNH353                  | ARBHI-TBCH353   | -         | -                               | -               | ARBHI-SHXTI127U                | 30 Ncm        |
|  | 3.0 mm    | ARBHI-TBCNH453                  | ARBHI-TBCH453   | -         | -                               | -               |                                |               |
|  | 3.0 mm    | ARBHI-TBCNH573                  | ARBHI-TBCH573   | -         | -                               | -               |                                |               |
|  | 2.1 mm    | ARCCO-TBCNH3321                 | ARCCO-TBCH3321  | -         | -                               | -               | Coming soon                    | 20 Ncm        |
|  | 2.1 mm    | ARCCO-TBCNH4821                 | ARCCO-TBCH3821  | -         | -                               | -               | Coming soon                    |               |
|  | 2.1 mm    | ARCCO-TBCNH21                   | ARCCO-TBCH521   | -         | -                               | -               | Coming soon                    |               |
|  | -         | -                               | -               | -         | -                               | -               | ARDA-SHTITC134                 | 15 Ncm        |
|  | -         | -                               | -               | -         | -                               | -               |                                |               |
|  | 1.5 mm    | ARDX-TBCNH3415                  | ARDX-TBCH3415   | 3.0 mm    | ARDX-TBCNH343                   | ARDX-TBCH343    | ARDX-SHTI122U                  | 24 Ncm        |
|  | 1.5 mm    | ARDX-TBCNH3815                  | ARDX-TBCH3815   | 3.0 mm    | ARDX-TBCNH383                   | ARDX-TBCH383    |                                |               |
|  | 1.5 mm    | ARDX-TBCNH4515                  | ARDX-TBCH4515   | 3.0 mm    | ARDX-TBCNH453                   | ARDX-TBCH453    |                                |               |
|  | 1.5 mm    | ARDX-TBCNH5515                  | ARDX-TBCH5515   | 3.0 mm    | ARDX-TBCNH553                   | ARDX-TBCH553    |                                |               |
|  | 3.0 mm    | ARNAC-TBCNH353                  | ARNAC-TBCH353   | -         | -                               | -               | ARNAC-SUGTI35                  | 35 Ncm        |
|  | 3.0 mm    | ARNAC-TBCNH433                  | ARNAC-TBCH433   | -         | -                               | -               | ARNAC-SUGTI43                  |               |
|  | 1.5 mm    | ARNB-TBCNH3515                  | ARNB-TBCH3515   | 3.0 mm    | ARNB-TBCNH353                   | ARNB-TBCH353    | ARNAC-SUGTI35                  | 35 Ncm        |
|  | 1.5 mm    | ARNB-TBCNH4115                  | ARNB-TBCH4115   | 3.0 mm    | ARNB-TBCNH413                   | ARNB-TBCH413    | ARNB-SUGTI41                   |               |
|  | 1.5 mm    | ARNRT-TBCNH3515                 | ARNRT-TBCH3515  | 3.0 mm    | ARNRT-TBCNH353                  | ARNB-TBCH413    | ARNRT-SUGTI35                  | 35 Ncm        |
|  | 1.5 mm    | ARNRT-TBCNH4315                 | ARNRT-TBCH4315  | 3.0 mm    | ARNRT-TBCNH433                  | ARNRT-TBCH353   | ARNRT-SUGTI45                  |               |
|  | 1.5 mm    | ARNRT-TBCNH515                  | ARNRT-TBCH515   | 3.0 mm    | ARNRT-TBCNH53                   | ARNRT-TBCH433   |                                |               |
|  | -         | -                               | -               | -         | -                               | ARNRT-TBCH53    |                                |               |
|  | 3.0 mm    | AROH-TBCNH33                    | AROH-TBCH33     | -         | -                               | -               | AROH-SHTI12233                 | 20 Ncm        |
|  | 3.0 mm    | AROH-TBCNH43                    | AROH-TBCH43     | -         | -                               | -               | AROH-SHXTI12240                | 30 Ncm        |
|  | 3.0 mm    | ARSBL-TBCNH333                  | ARSBL-TBCH333   | -         | -                               | -               | ARSBL-STRXTI33N                | 35 Ncm        |
|  | 3.0 mm    | ARSBL-TBCNH413                  | ARSBL-TBCH413   | -         | -                               | -               | ARSBL-STRXTI44                 |               |
|  | -         | -                               | -               | -         | -                               | -               | ARSTL-STRXTI44                 | 35 Ncm        |
|  | -         | -                               | -               | -         | -                               | -               |                                |               |
|  | 1.5 mm    | ARZC-TBCNH3415                  | ARZC-TBCH3415   | 3.0 mm    | ARZC-TBCNH343                   | ARZC-TBCH343    | ARZC-SHTI1203                  | 20 Ncm        |
|  | 1.5 mm    | ARZC-TBCNH4115                  | ARZC-TBCH4115   | 3.0 mm    | ARZC-TBCNH413                   | ARZC-TBCH413    |                                |               |
|  | 1.5 mm    | ARZC-TBCNH515                   | ARZC-TBCH515    | 3.0 mm    | ARZC-TBCNH53                    | ARZC-TBCH53     |                                |               |
|  |           | Coming soon                     | Coming soon     |           | Coming soon                     | Coming soon     |                                |               |
|  | 1.5 mm    | ARZEX-TBCNH4115                 | ARZEX-TBCH4115  | 3.0 mm    | ARZEX-TBCNH413                  | ARZEX-TBCH413   | ARZEX-SHXTI1203                | 20 Ncm        |
|  | 1.5 mm    | ARZEX-TBCNH515                  | ARZEX-TBCH515   | 3.0 mm    | ARZEX-TBCNH53                   | ARZEX-TBCH453   |                                |               |
|  | 1.5 mm    | ARZTSV-TBCNH3515                | ARZTSV-TBCH3515 | 3.0 mm    | ARZTSV-TBCNH353                 | ARZTSV-TBCH353  | ARZTSV-SHXTI1274               | 30 Ncm        |
|  | 1.5 mm    | ARZTSV-TBCNH4515                | ARZTSV-TBCH4515 | 3.0 mm    | ARZTSV-TBCNH453                 | ARZTSV-TBCH453  |                                |               |
|  | 1.5 mm    | ARZTSV-TBCNH5715                | ARZTSV-TBCH5715 | 3.0 mm    | ARZTSV-TBCNH573                 | ARZTSV-TBCH573  |                                |               |

Notes

---

---

---

---

---

---

---

---

---

---

---

---

---

---

---

---

---

---

---

---

---

---

---

---



**azure**™ | A ZimVie Brand

For more information, visit [azuredental.com](https://azuredental.com)  
or call: 1-888-800-8018

Unless otherwise indicated, as referenced herein, all trademarks and intellectual property rights are the property of ZimVie Inc. or an affiliate; and all products are manufactured by one or more of the dental subsidiaries of ZimVie Inc. (Biomet 3i, LLC, Zimmer Dental, Inc., etc.) and marketed and distributed by ZimVie Dental and its authorized marketing partners. CEREC is a trademark and/or registered trademark of DENTSPLY SIRONA Implants. ZimVie is an authorized distributor of iTero Products which are manufactured by Align Technology, Inc. Invisalign, iTero, iTero Element, the iTero logo, among others, are the trademarks and/or service marks of Align Technology, Inc. or one of its subsidiaries or affiliated companies and may be registered in the U.S. and/or other countries. For additional product information, please refer to the individual product labeling or instructions for use. Product clearance and availability may be limited to certain countries/regions. This material is intended for clinicians only and does not comprise medical advice or recommendations. Distribution to any other recipient is prohibited. This material may not be copied or reprinted without the express written consent of ZimVie. ZV1606 GLBL REV B 07/24 ©2024 ZimVie Inc. All rights reserved.

